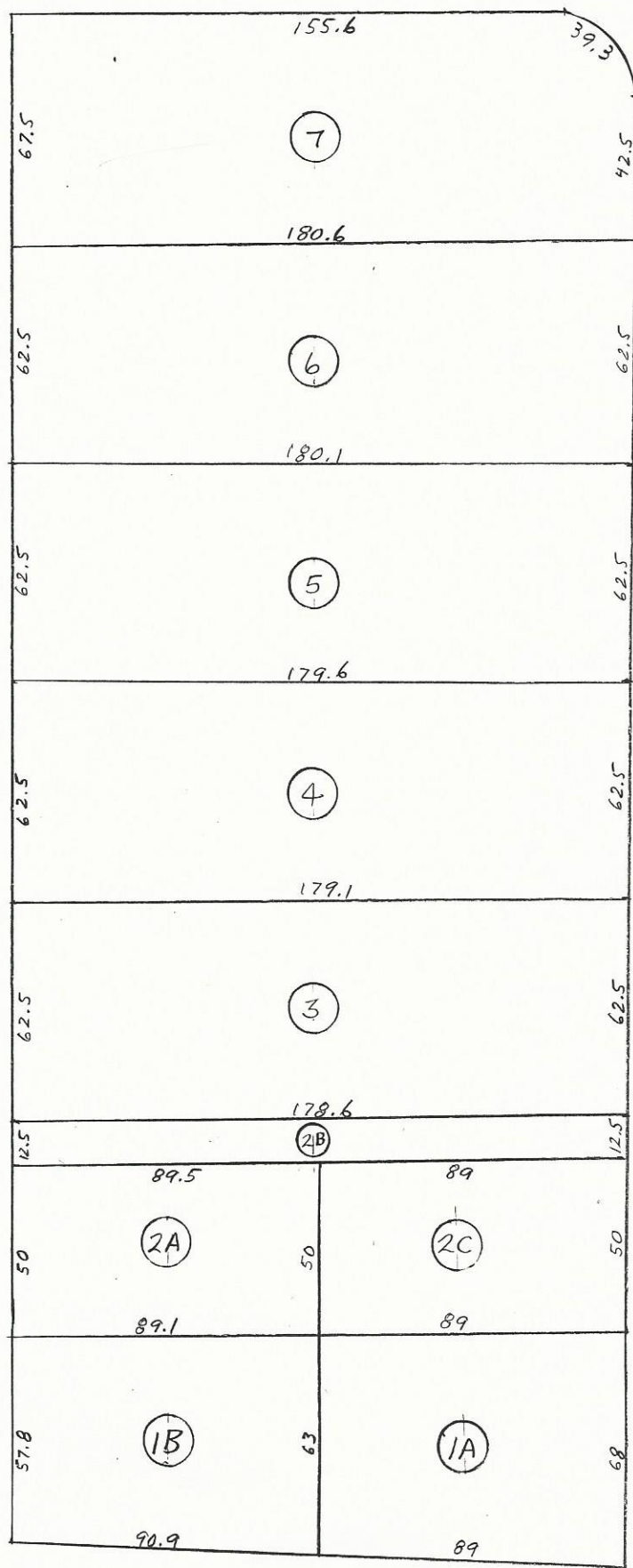


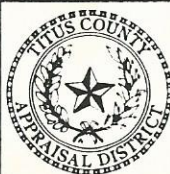
ST.



FOURTH

OLD STATE HWY 49 ~ GIEGER RD.

THIS PLAT IS FOR
TITUS COUNTY APPRAISAL
DISTRICT USE ONLY



TITUS COUNTY
APPRAISAL DISTRICT
MT. PLEASANT, TEXAS

GIEGER HEIGHTS ADDN --- TALCO

BLOCK A

PLAT RECORD: 1-175-100

ACRES

MAP NO.

SHEET _____ OF _____ SHEETS