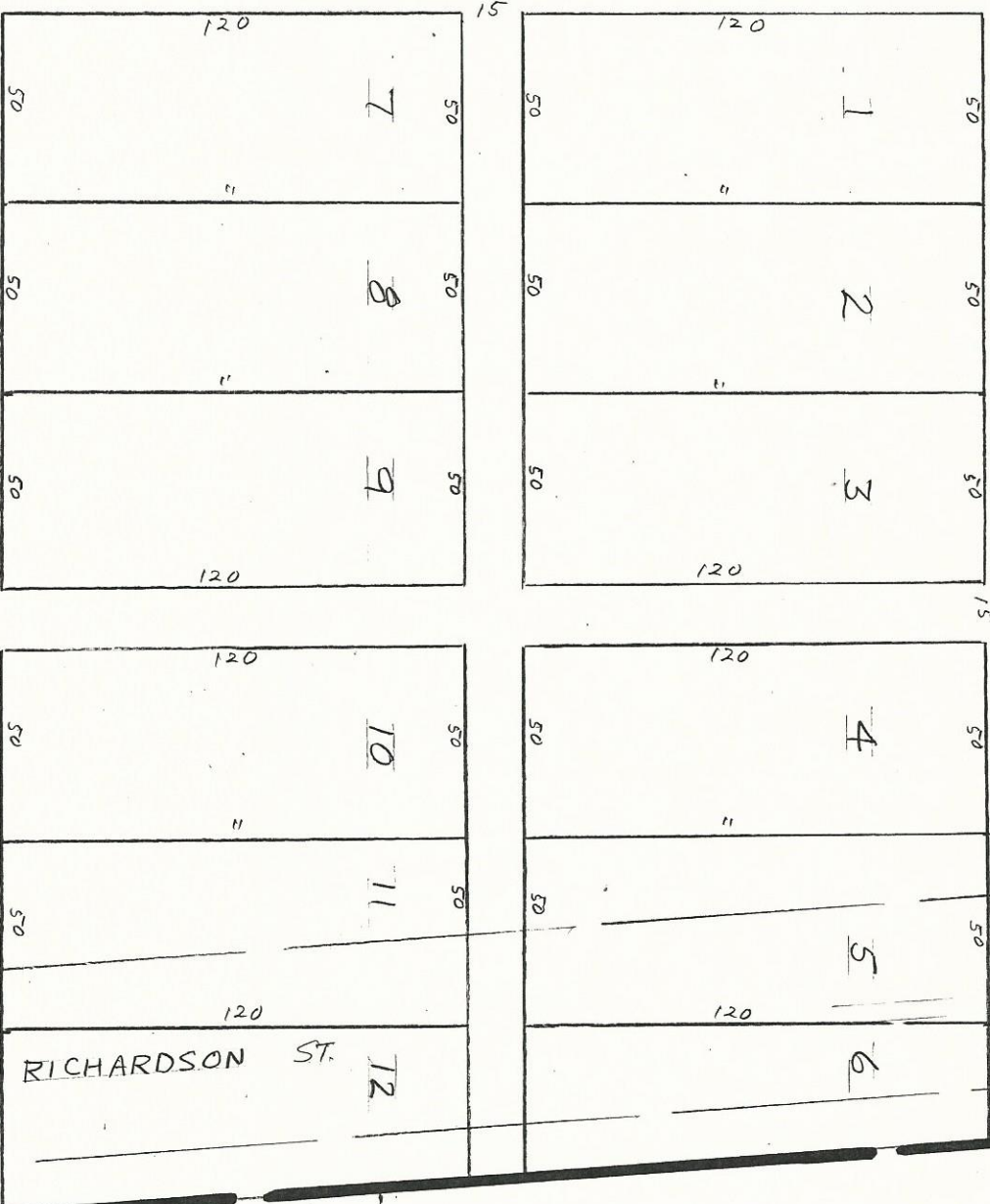


SLSWRR NORTH RESERVATION

JEFFERSON

STREET

SECOND ST.



RICHARDSON ST.

THIS PLAT IS FOR
TITUS COUNTY APPRAISAL
DISTRICT USE ONLY

ASSESSED AS
ACREAGE IN
A-111

EBL ORIG WINFIELD



TITUS COUNTY
APPRAISAL DISTRICT
MT. PLEASANT, TEXAS

ORIG - WINFIELD BLOCK 10
DEED RECORD ACRES MAP NO.
SHEET OF SHEETS